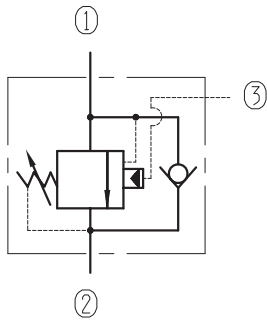


BPF16S-00/X.Y

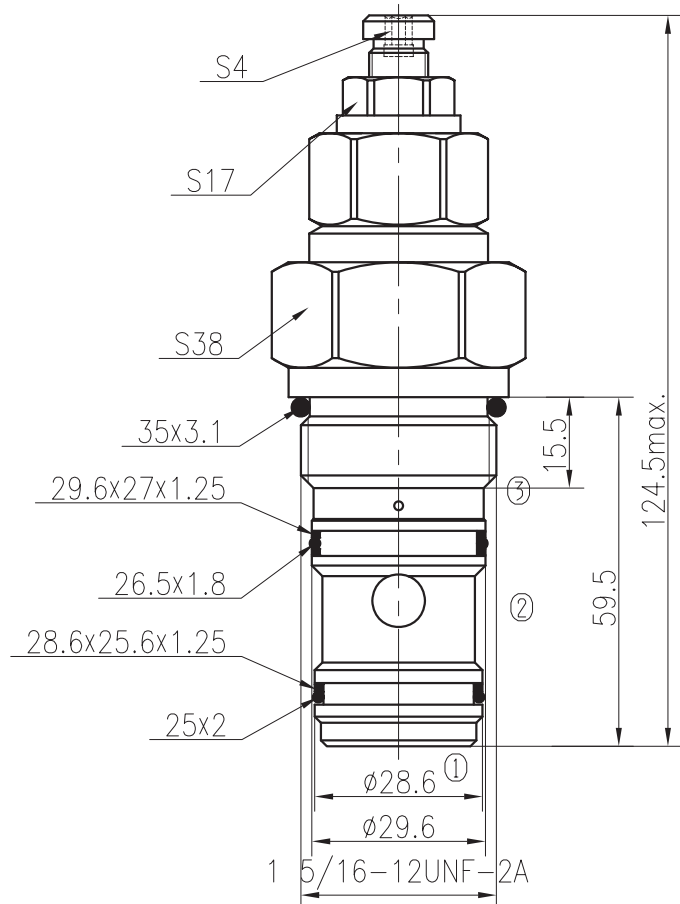


Specifications:

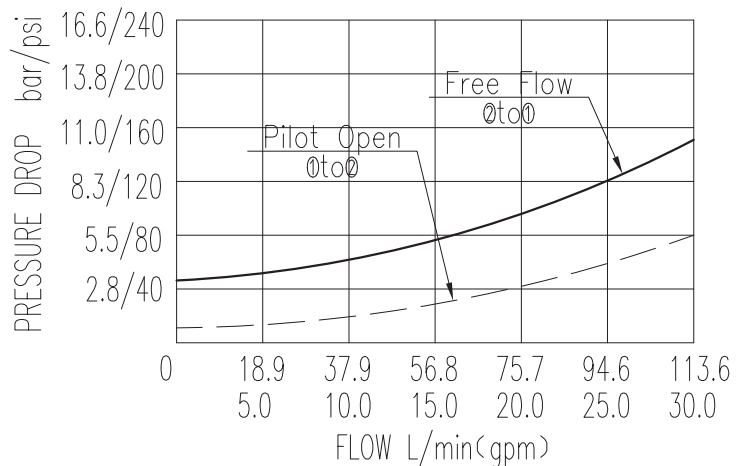
Max.Working Pressure :	270bar
Flow Max :	120L/min
Internal Leakage :	<0.4ml/min
Filtration Of Oil :	25μm or better
Temperature :	-30~+100℃ (Standard Buna Seals)
Cavity :	T-5107
Installation torque :	90~100Nm
Pilot Ratio :	3.5:1

The valve controls moving load and preventing it from running ahead of the pump, locking the load in any position, it also provides static overload and thermal expansion protection

The valve allows free flow from ② to ① and blocks reverse flow until a pilot pressure proportional to the load pressure is sensed at ③ modulating flow from ① to ②.



32 cST Oil/45° C

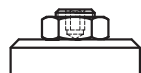


X

ADJUSTMENTS

03

Leakproof hex. and socket screw



Y

SPRINGS

	Press. range bar	Press. increase bar/turn	Standard setting bar	Cracking press. bar
05	80~350		210	180