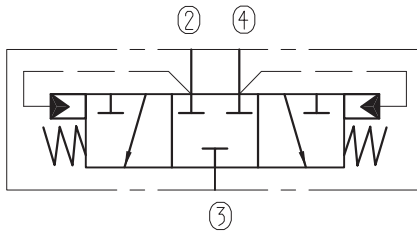


Hydraulic Operated Directional Valves

BYHF10-33L0/X.Y.Z



Specifications:

Max working Pressure : 350bar

Flow Max : 25L/min

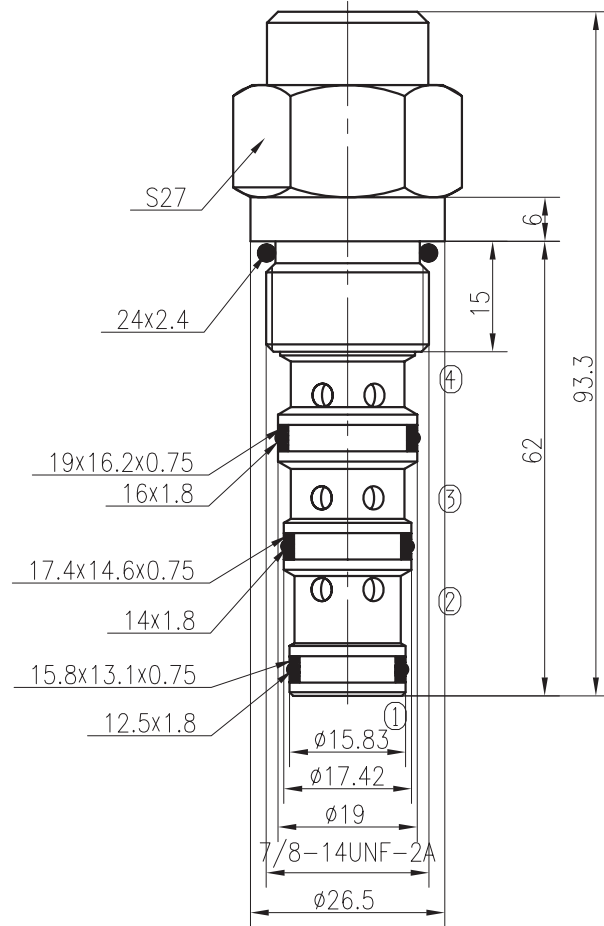
Internal Leakage : $\leq 80\text{ml/min}$ at 210bar

Filtration Of Oil : $25\mu\text{m}$ or better

Temperature : $-30\sim+100^{\circ}\text{C}$
Standard Buna Seals

Cavity : T5-3

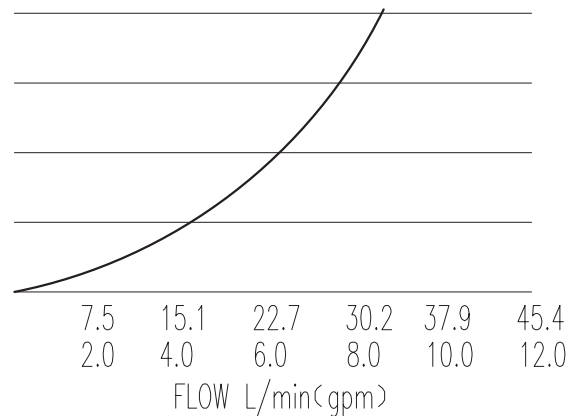
Installation torque : 33.9~36.7Nm



32 cST Oil/45° C

In neutral state(unpiloted),the valve allows flow from ②to④ bidirectionally.When pilot port ③ is applied sufficient pressure the valve allows flow from ② to ④ and block flow from ②to④ bidirectionally.

Back pressure at ④ will increase the pilot pressure required at ③ to shift at a ratio 1:1.



X	PORTING	Y	SEALS
0	Cartridge Only	N	Buna
4G	G1/4	V	Fluor.
8G	G3/8		
4T	SAE4		
6T	SAE6		

Z	SPRINGS	
	Full Shift Pressure	Full Shift Pressure
05		
10		
15	11.4	