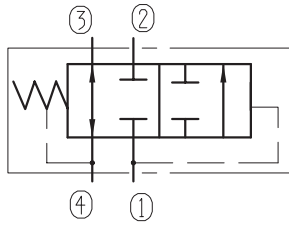


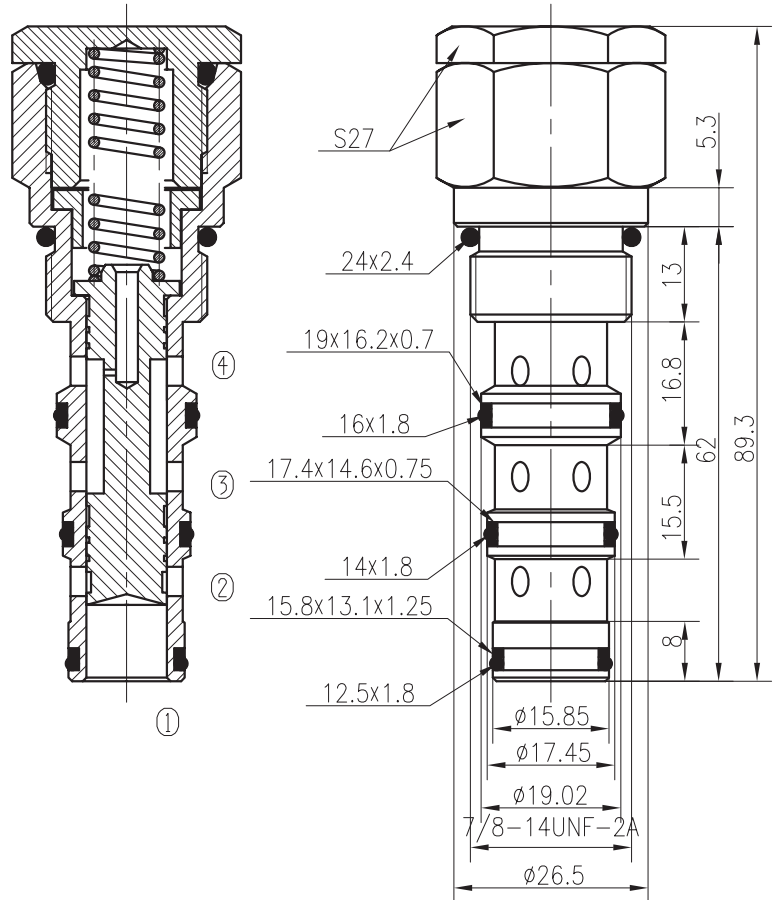
Hydraulic Operated Directional Valves

BYHF10-24C/X.Y.Z

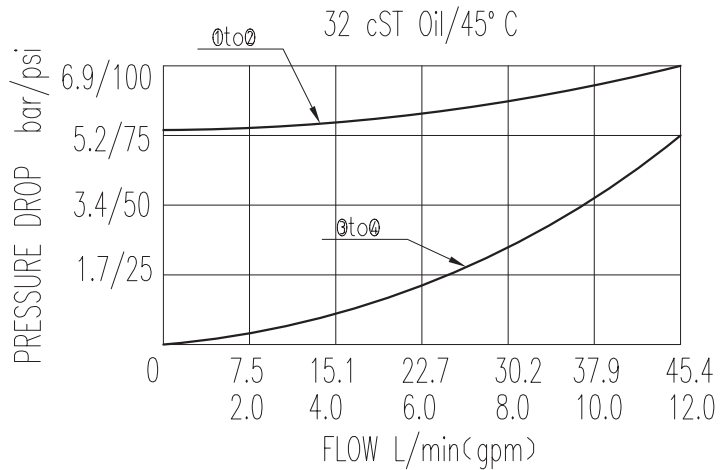


Specifications:

Max working Pressure :	210bar
Flow Max :	45L/min
Internal Leakage	≤60ml/min at 210bar
Filtration Of Oil :	25μm or better
Temperature :	-30~+100℃ (Standard Buna Seals)
Cavity :	T5-3
Installation torque :	33.9~36.7Nm



In neutral state (unpiloted), the valve allows flow from ③ to ④ bidirectionally. When pilot port ② is applied sufficient pressure the valve allows flow from ① to ④ and block flow from ③ to ④ bidirectionally. Back pressure at ④ will increase the pilot pressure required at ② to shift at a ratio 1:1.



X	PORTING	Y	SEALS
0	Cartridge Only	N	Buna
4G	G1/4	V	Fluor.
8G	G3/8		
4T	SAE4		
6T	SAE6		

Z	SPRINGS	
	Full Shift Pressure bar	Full Shift Pressure bar
05	5.3	
10	7.2	
15	10	