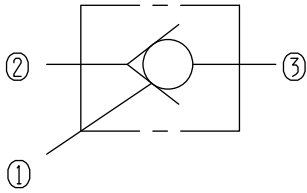


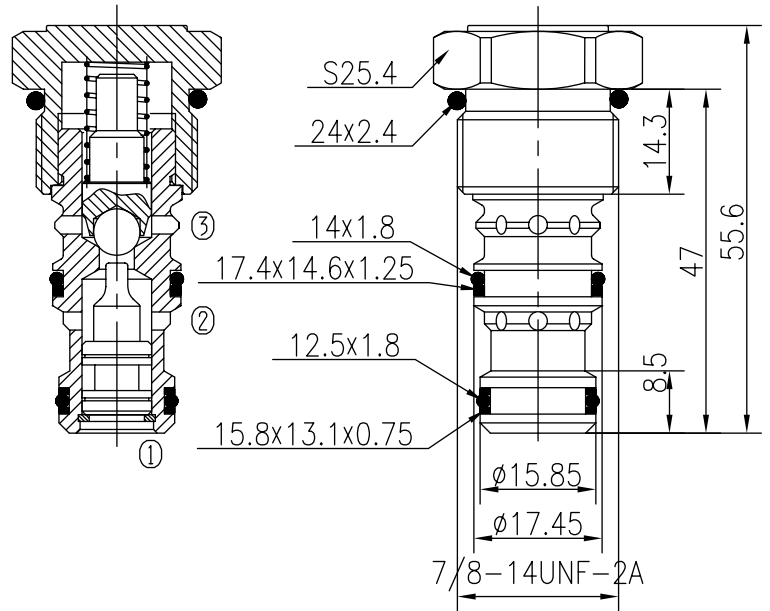
Hydraulic Operated Check Valves (Ball-type)

BYDF10-02/X.Y.Z



Specifications:

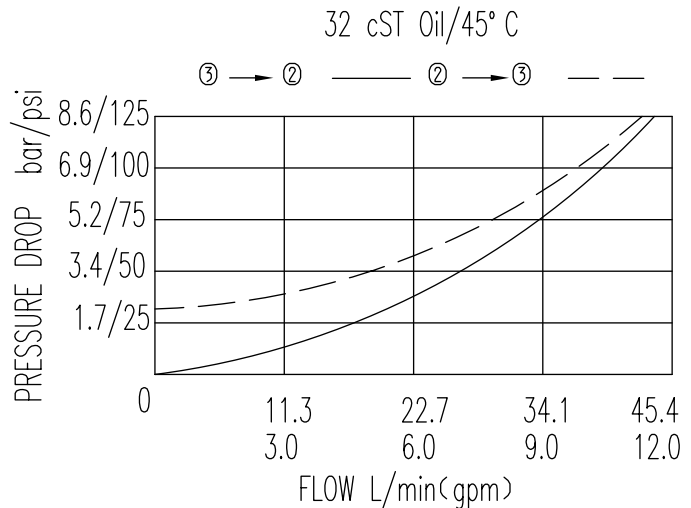
Max working Pressure :	240bar
Flow Max :	45L/min
Internal Leakage :	<0.3ml/min at 210bar
Filtration Of Oil :	25µm or better
Temperature :	-30~+100°C (Standard Buna Seals)
Cavity :	T5-2
Installation torque :	33.9~36.7Nm
Standard Block Model	T5-21*/23*/24*/26*



The valve allows flow from ② to ③ with very low pressure drop, while blocks flow from ③ to ②.

The valve blocks flow from ③ to ② until sufficient pressure is applied at ①.

The valve has a 3.9:1 pilot ratio, meaning that at least 1/3.9 of the load pressure held at ③ is required at ① to open the valve.



X	PORTING	Y	SEALS
0	Cartridge Only	N	Buna
4G	G1/4	V	Fluor
8G	G3/8		
4T	SAE4		
6T	SAE6		

Z	SPRINGS	
	Cracking Pressure bar	Cracking Pressure bar
05	2	