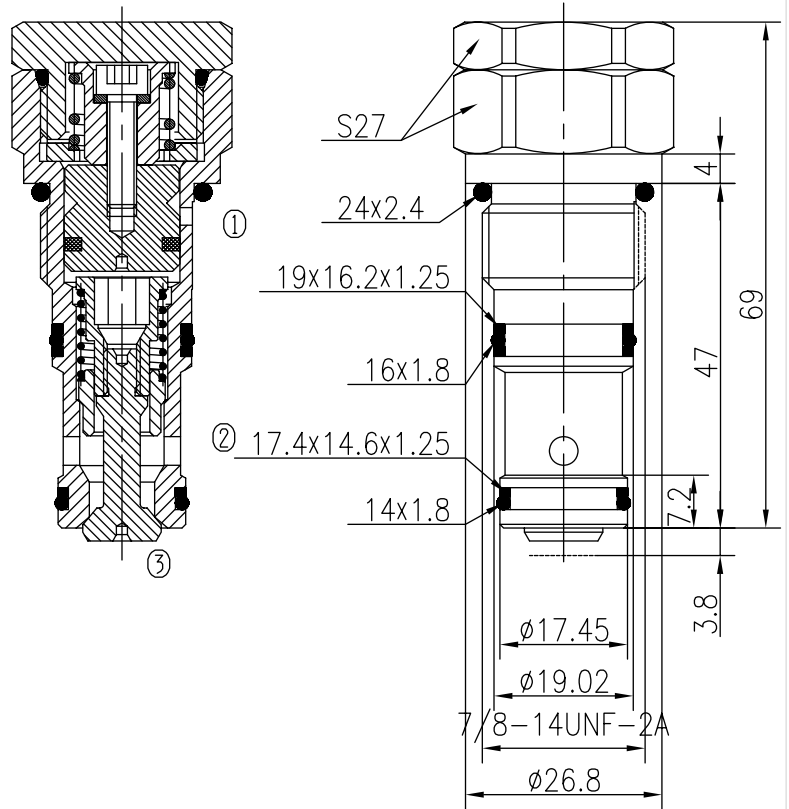
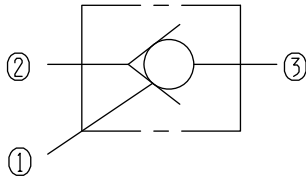


Hydraulic Operated Check Valves (Poppet-type)

BYDF10-01/X.Y.Z



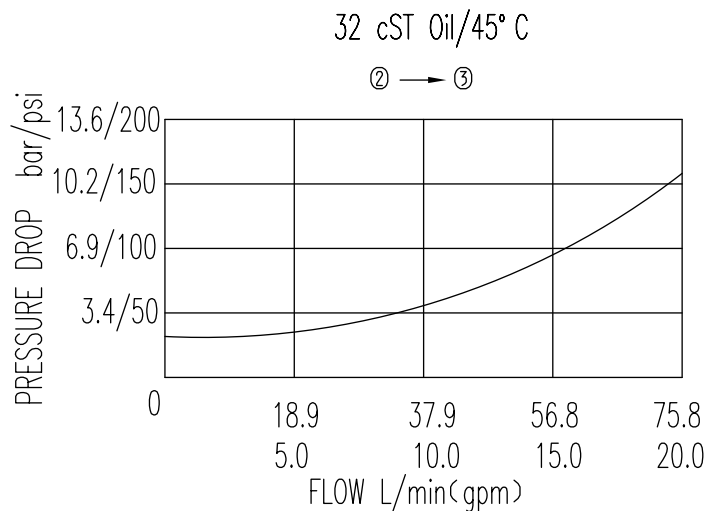
Specifications:

Max working Pressure :	350bar
Flow Max :	75L/min
Internal Leakage :	≤0.3ml/min at 210bar
Filtration Of Oil :	25μm or better
Temperature :	-30~+100℃ (Standard Buna Seals)
Cavity :	T-3304
Installation torque :	33.9~36.7Nm

The valve allows flow from ② to ③ with very low pressure drop, while blocks flow from ③ to ②.

The valve blocks flow from ③ to ② until sufficient pressure is applied at ①.

The valve has a 3.0:1 pilot ratio, meaning that at least 1/3.0 of the load pressure held at ③ is required at ① to open the valve.



X	PORTING	Y	SEALS
0	Cartridge Only	N	Buna
		V	Fluor

Z	SPRINGS	
	Cracking Pressure bar	Cracking Pressure bar
05	0.8	
10	2	
15	4	