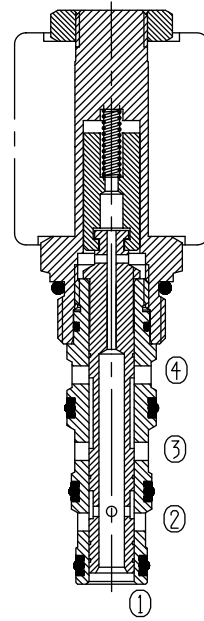


Four Way Two Position (Spool-type)

BST08-243

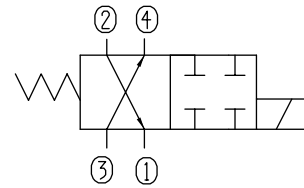
Description of the process

When de-energized, the valve allows flow from ② to ①, and ③ to ④;
 When energized, the valve blocks flow to all ports.



Specifications:	210bar
Max. Working Pressure	See Performance
Flow Max.	<80ml/min at 210bar
Operating Volt	12VDC, 24VDC, 110VAC, 220VAC
Min Voltage Requires	85% of normal voltage
Filtration Of Oil	20μm or better
Type of Standard Cavity	T4-3
Temperature	-30~+100°C Standard Buna Seals
Standard Block Model	T4-31*/33*/34*/36*

Symbol:

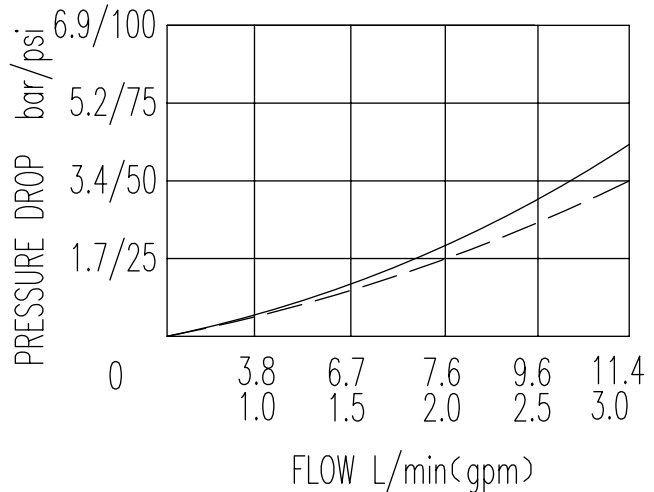


Characteristic:

32 cST Oil/40°C

③ — ④ ———

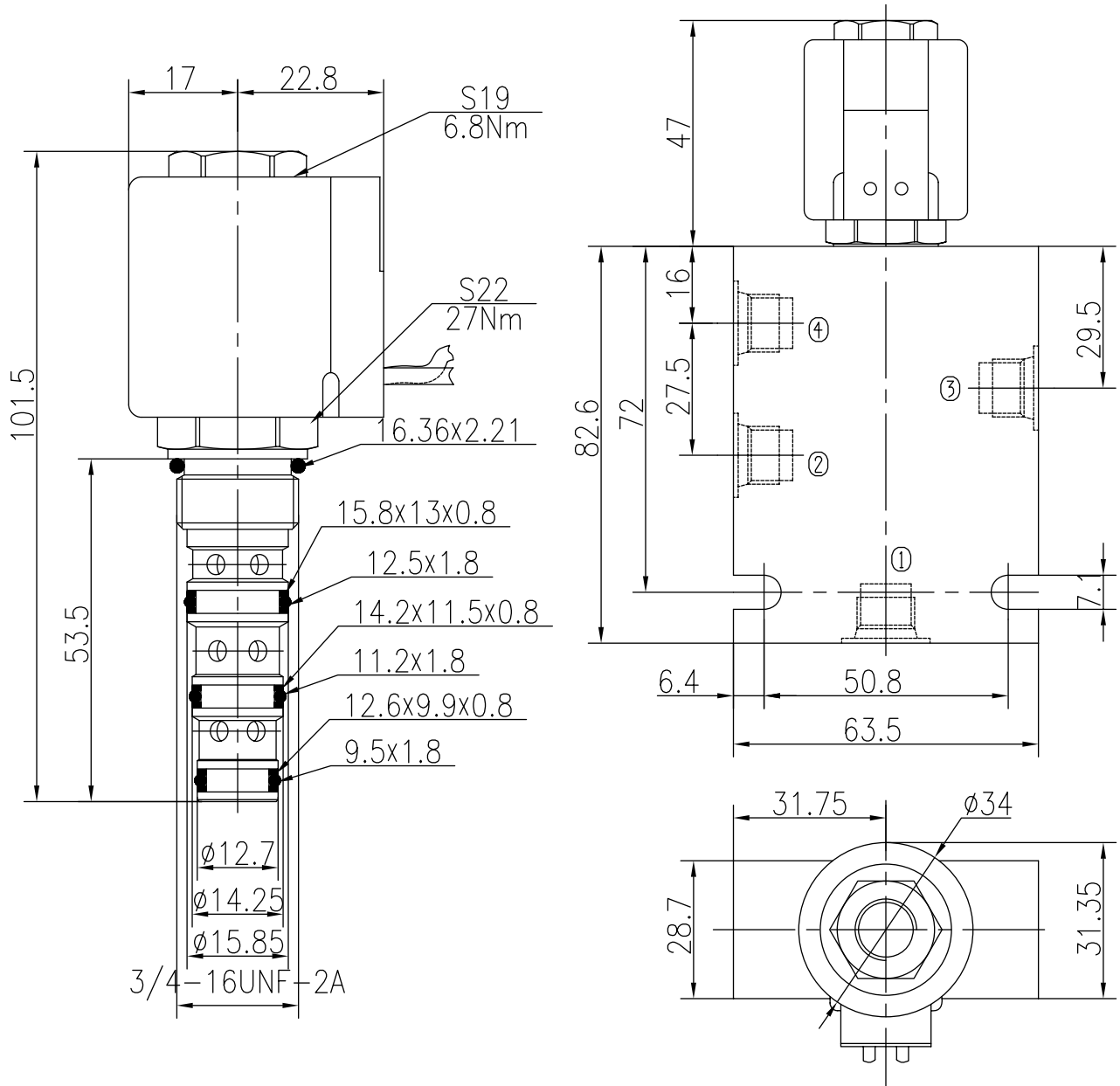
② — ① — — —



Four Way Two Position (Spool-type)

BST08-243

Profile dimensions



TO ORDER

BST08 -243

Solenoid Valve
Function

Body Porting

Omit for Cartridge only

G1/4 4G
G3/8 8G
SAE4 4T
SAE6 6T

Seals

Buna(Std.)

Fluorocarbon

Voltage

12 12VDC
24 24VDC
110 110VAC
220 220VAC

Connection

DL Double Leads

DH Electrical Outlet