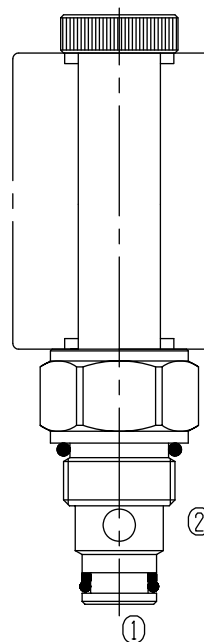


# Two Way Two Position (Poppet-type)

BST08-228L Bidirectional Normally Closed

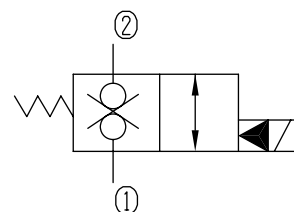
## Description of the process

When de-energized, the valve blocks flow in both directionals,  
 When energized, allowing flow from ② to ① and ① to ②.



Specifications:	250bar
Max. Working Pressure	See Performance
Flow Max.	0.3ml/min at 210bar
Internal Leakage	5drops/min
Operating Volt	12VDC, 24VDC, 110VAC, 220VAC
Min Voltage Requires	85% of normal voltage
Filtration Of Oil	20μm or better
Type of Standard Cavity	T4-1
Temperature	-30~+100°C Standard Buna Seals
Standard Block Model	T4-11*/13*/14*/16*

Symbol:



Characteristic: 32 cST Oil/40°C

