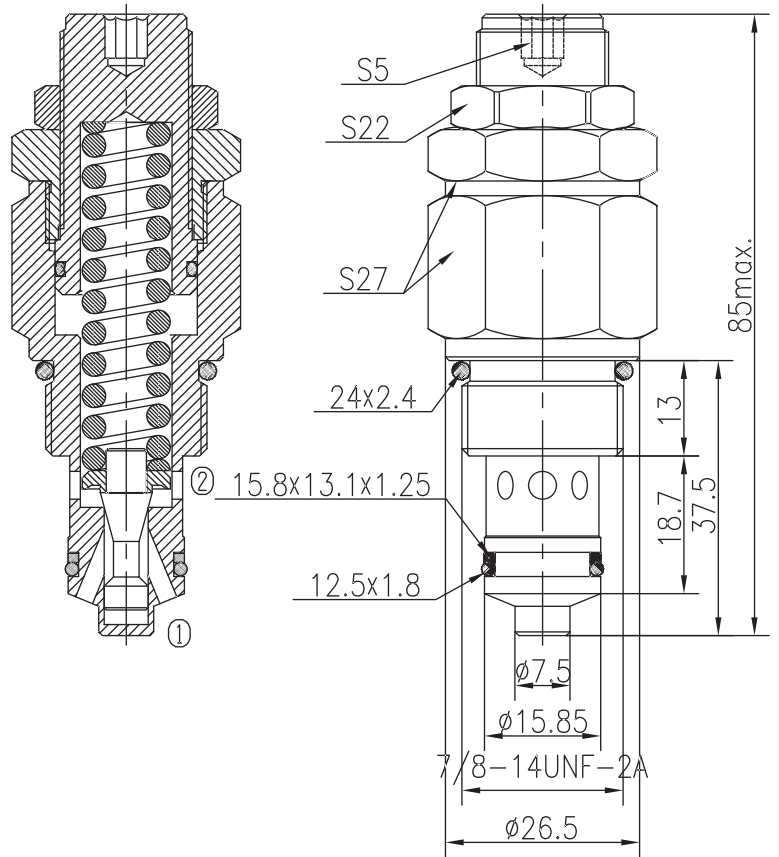
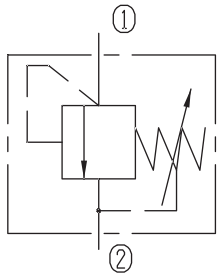


Directly Operated Relief Valves (Poppet-type)



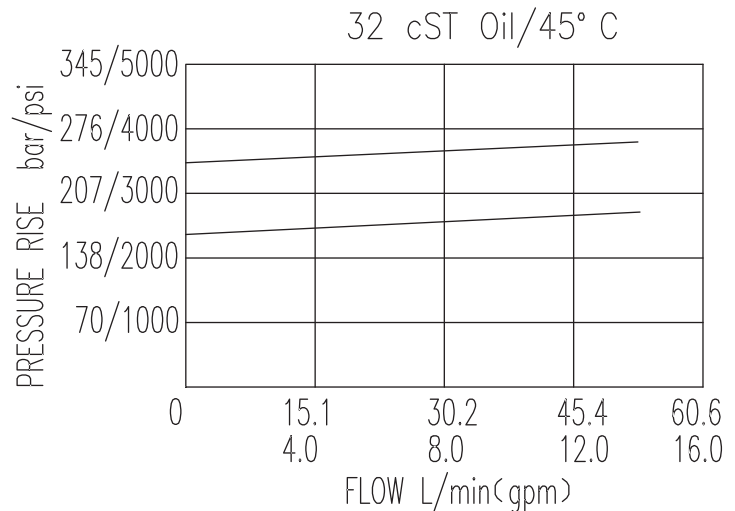
BYF10-19/X.Y

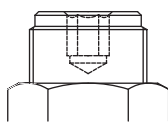


Specifications:

Max working Pressure :	285bar
Flow Max :	50L/min
Internal Leakage :	<30ml/min (80~90% of Setting Pressure at 30L/min)
Filtration Of Oil :	25μm or better
Temperature :	-30~+100°C (Standard Buna Seals)
Cavity :	T5-2
Installation torque :	33.9~36.7Nm

The valve blocks flow from ① to ② until 85% pressure is present at ①. With the continued increase pressure on ①, ① to ② began to overflow, until to the spring's maximum pressure.



X	ADJUSTMENTS	
03	Leakproof hex. and socket screw	

Y	SPRINGS			
	Press. range bar	Press. increase bar/turn	Standard setting bar	Cracking press. bar
05	15~195	33	180	155
10	55~285	51	250	222