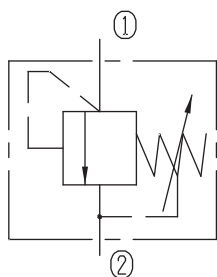


Directly Operated Relief Valves (Poppet-type)

BYF06-00/X.Y



Specifications:

Max working Pressure : 350bar

Flow Max : 11L/min

Internal Leakage : <30ml/min

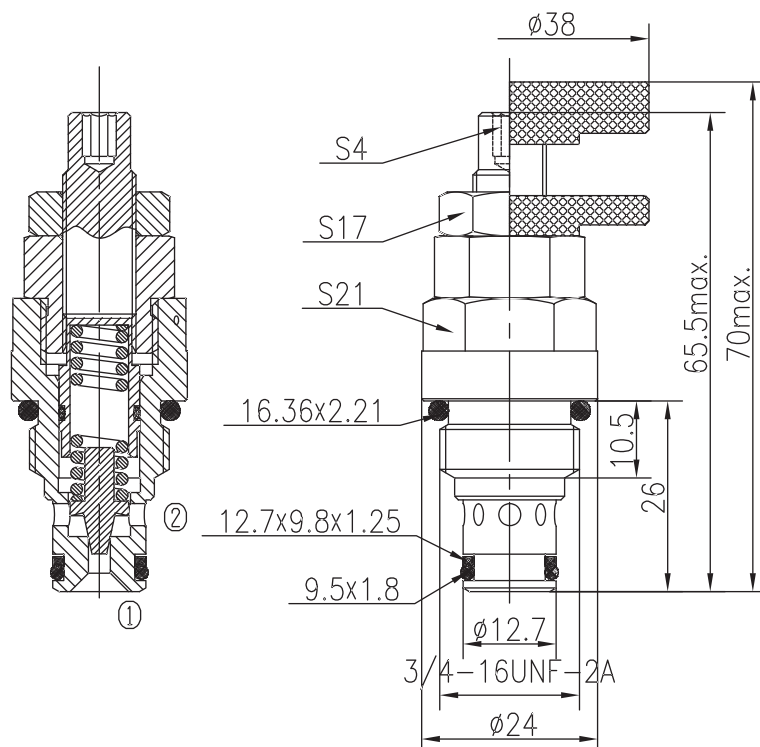
(75~85% of Setting Pressure at 8L/min)

Filtration Of Oil : 25μm or better

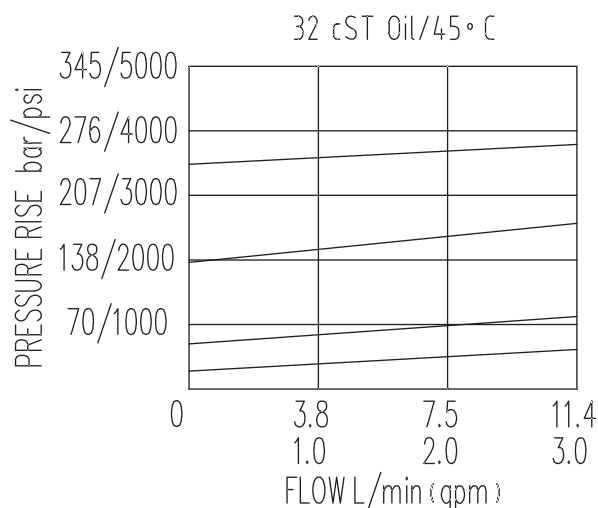
Temperature : -30~+100℃
(Standard Buna Seals)

Cavity : T4-1

Installation torque : 24.5~27.2Nm



The valve blocks flow from ① to ② until 85% pressure is present at ①. With the continued increase pressure on ①, ① to ② began to overflow, until to the spring's maximum pressure.



X	ADJUSTMENTS	
03	Leakproof hex. and Socket Screw	
05	Alum. Knob and Locking Nut	

Y	SPRINGS			
	Press. range bar	Press. increase bar/turn	Standard setting bar	Cracking press. bar
05	8~38	6.6	35	25
10	21~88	18	80	57
15	128~248	47	160	135
20	210~345	79	250	220