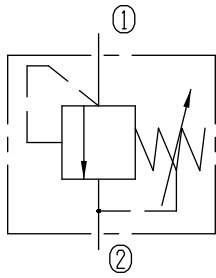


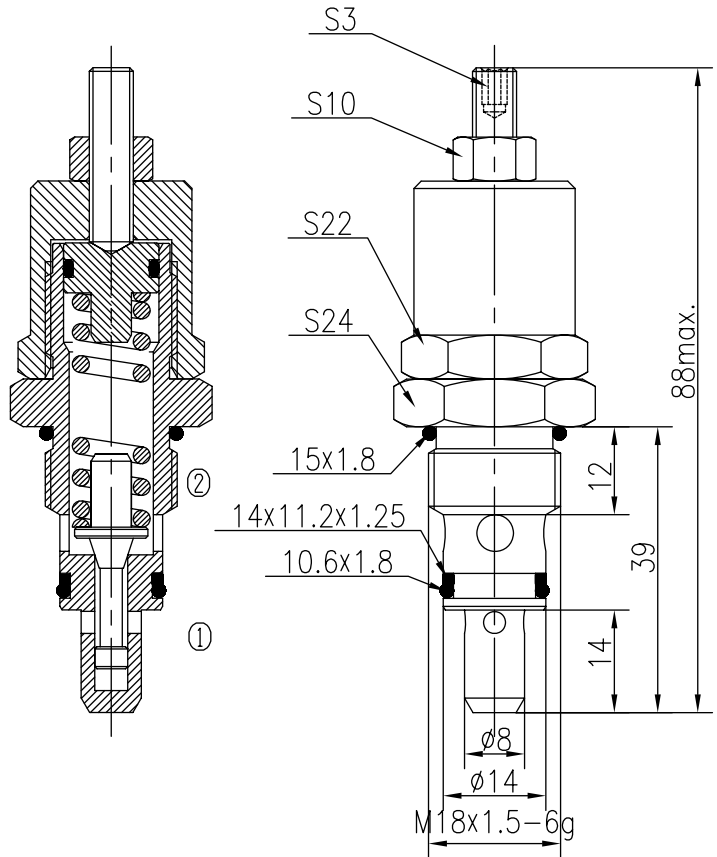
Directly Operated Relief Valves (Poppet-type)

BYF04-05/X.Y

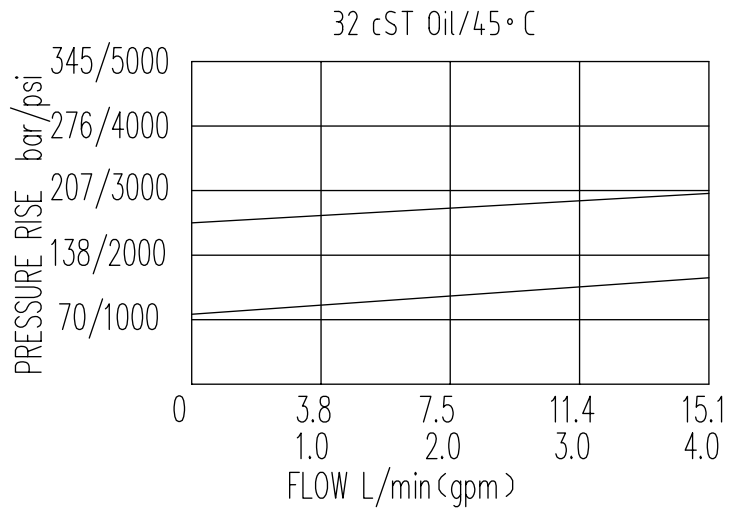


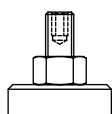
Specifications:

| | |
|------------------------|-----------------------------------------------------|
| Max working Pressure : | 210bar |
| Flow Max : | 15L/min |
| Internal Leakage : | ≤30ml/min (75~85% of Setting Pressure at 8L/min) |
| Filtration Of Oil : | 25μm or better |
| Temperature : | -30~+100°C (Standard Buna Seals) |
| Cavity : | T-2102(See Page 7.1.7) |
| Installation torque : | 13.6~16.3Nm |



The valve blocks flow from ① to ② until 85% pressure is present at ①. With the continued increase pressure on ①, ① to ② began to overflow, until to the spring's maximum pressure.



| X | ADJUSTMENTS | |
|----|---------------------------------|-------------------------------------------------------------------------------------|
| 03 | Leakproof hex. and Socket Screw |  |

| Y | SPRINGS | | | |
|----|------------------|--------------------------|----------------------|---------------------|
| | Press. range bar | Press. increase bar/turn | Standard setting bar | Cracking press. bar |
| 10 | 12~120 | 18 | 100 | 75 |
| 15 | 100~210 | 38 | 200 | 170 |