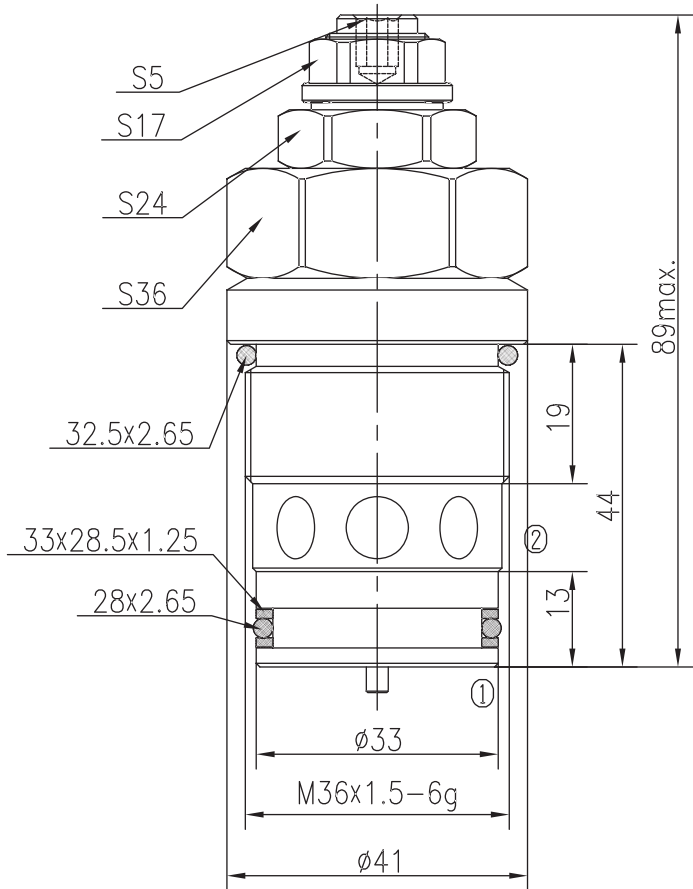
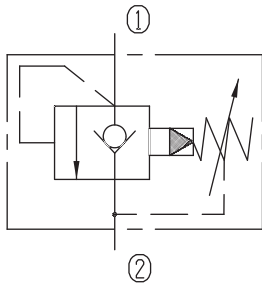


Pilot-operated Check Relief Valves (Poppet-type)



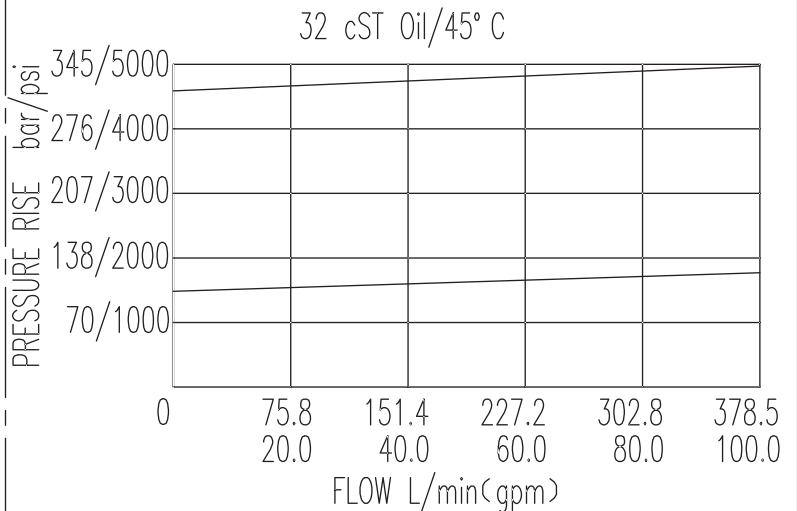
BXDYF32-00/X.Y

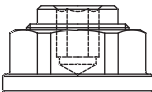


Specifications:

Max working Pressure :	450bar
Flow Max :	400L/min
Internal Leakage :	<30ml/min (80~90% of Setting Pressure at 30L/min)
Filtration Of Oil :	25μm or better
Temperature :	-30~+100°C (Standard Buna Seals)
Cavity :	T-2416
Installation torque :	88.4~102Nm
Reverse Cracking Pressure :	1.5bar

The valve blocks flow from ① to ② until 90% pressure is present at ①. With the continued increase pressure on ①, ② to ① began to overflow, until to the spring's maximum pressure.



X	ADJUSTMENTS	
03	Looseproof hex. and socket screw	

Y	SPRINGS			
	Press. range bar	Press. increase	Standard setting bar	Cracking press. bar
05	10~210		120	102
10	20~450		350	320