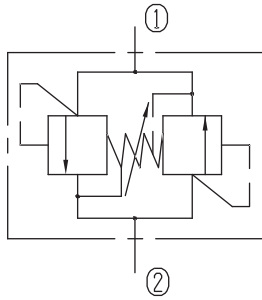


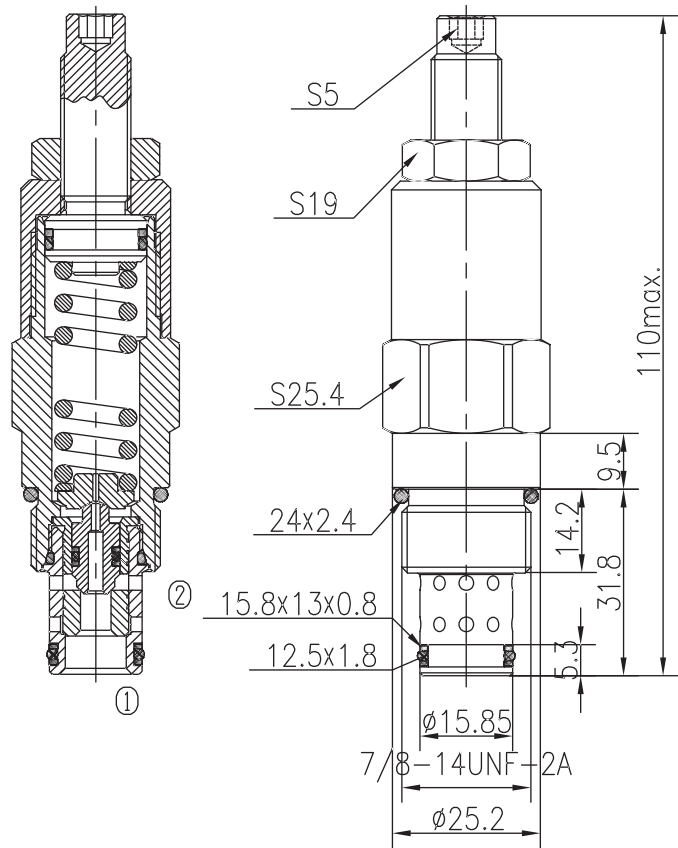
Bi-directional Relief Valves (Poppet-type)

BSYF10-00/X.Y

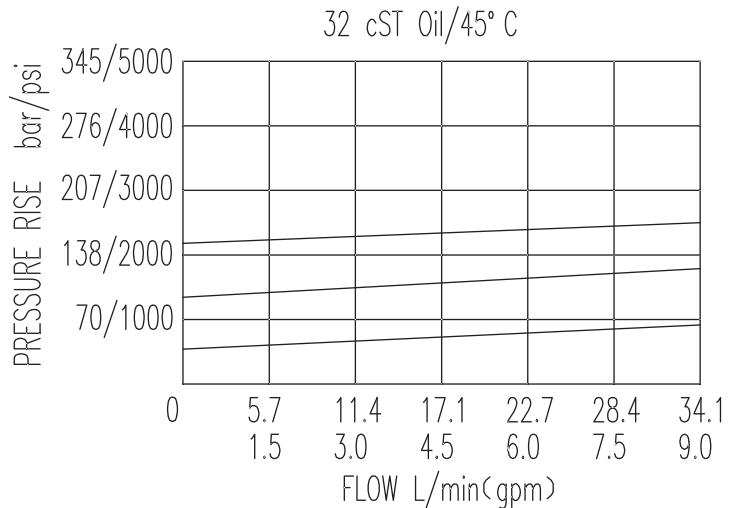


Specifications:

Max working Pressure :	207bar
Flow Max :	35L/min
Internal Leakage :	<3ml/min (80% of Setting Pressure at 12L/min)
Filtration Of Oil :	25μm or better
Temperature :	-30~+100℃ (Standard Buna Seals)
Cavity :	T5-1
Installation torque :	33.9~36.7Nm



The valve blocks flow from ① to ② until 85% pressure is present at ①. With the continued increase pressure on ①, ① to ② began to overflow, until to the spring's maximum pressure.



X	ADJUSTMENTS	
03	Leakproof hex. and socket screw	

Y	SPRINGS			
	Press. range bar	Press. increase bar/turn	Standard setting bar	Cracking press. bar
05	19~78	15	60	45
10	50~135	27	120	100
15	70~207	44	175	148