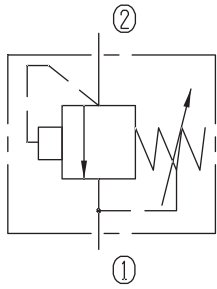


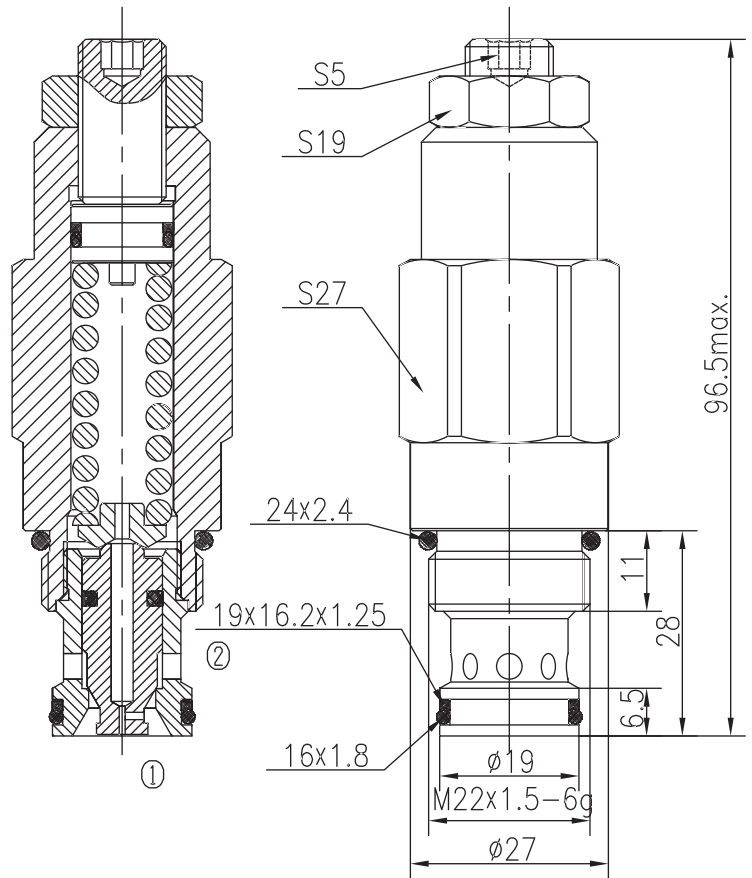
Differential Area Relief Valves (Poppet-type)

BCYF10-02/X.Y

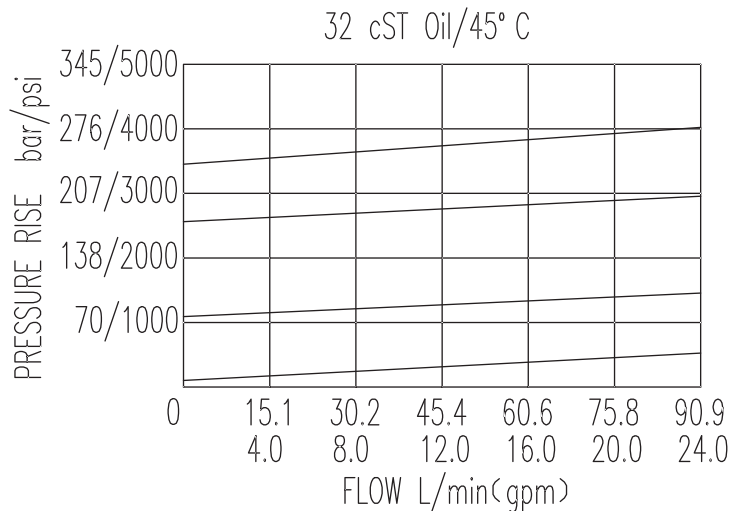


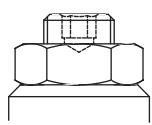
Specifications:

Max working Pressure :	320bar
Flow Max :	90L/min
Internal Leakage :	<30ml/min (75~85% of Setting Pressure at 60L/min)
Filtration Of Oil :	25μm or better
Temperature :	-30~+100℃ (Standard Buna Seals)
Cavity :	T-2112
Installation torque :	33.9~36.7Nm



The valve blocks flow from ② to ① until 85% pressure is present at ②. With the continued increase pressure on ②, ② to ① began to overflow, until to the spring's maximum pressure.



X	ADJUSTMENTS	
03	Leakproof hex. and socket screw	

Y	SPRINGS			
	Press. range bar	Press. increase bar/turn	Standard setting bar	Cracking press. bar
05	5~55	11	35	26
10	37~121	28	100	78
15	87~202	49	200	170
20	161~320	81	280	235